

Friday 13th July 2001 (unlucky for some)

NEWSLETTER

**THIRD
ISSUE**

Hello Everyone,

We hope you are all having a good summer.

Up here in Cumbria, or down here if you are in Scotland things are finally hotting up. CWG286 is about to start it's summer holidays as The Kendal Klipper on the 22nd July and as you can see from the advert over leaf we are about to start a new service around the Penrith area. This one will be run with the Preston Tiger CRN80. We hope it's going to prove as popular as the Klipper, if it does it will be running for next year as well! We are getting plenty of wedding bookings and quite a few enquiries for days out.

Because of Foot and Mouth there are very few tourists in the area so the route to Hawes isn't going to do as well as last year and we have only run one Mystery Tour so far :(but we are, as ever, optimistic and don't mind running round with an empty bus, as that gives Alison a chance to practice her gear changes and anyway, who said we do this for the passengers?

Earlier this year we had a group of 14 come to stay for 10 days to enjoy Cumbria and go out on the buses, it was a really great time and we all thoroughly enjoyed it. We are hoping to entertain more like this, so if you are part of a group and fancy an enjoyable and different holiday come to Bowber Head. But even just as individuals or couples don't forget you could come up and enjoy a break and if you come on a Monday you could go out Tuesday, Wednesday and Thursday on one of our tours, how complete do you need a holiday to be???

Love to see you all soon....From All at Bowber Head

STARTING SUNDAY 22nd JULY THE KENDAL KLIPPER ALSO APPEARING FOR ONE DAY ONLY ON SUNDAY 15th JULY



Free shopping bus
cruising Kendal every
half hour, seven days
a week, finishing on
the day of the
Torchlight.

The Klipper is operated by Cumbria Classic Coaches
to hire one of our vintage buses Tel: 015396 23254
www.cumbriaclassiccoaches.co.uk

Can anyone keep a secret??

We have heard that Cumbria Classic Coaches are about to win a really big award, we cannot tell anyone about it until after Wednesday 18th July but....and this is between you and me, it'll be really good! If you want to know more contact us after Wednesday (or watch the national press i.e. The Westmorland Gazette).

Business Link Grants:

We were successful in applying for one of the grants for businesses hit by foot and mouth. The grant is for Information Technology and Marketing so you can expect to see some really great brochures and adverts.

So here's a really BIG THANK-YOU to Business Link for this help.



What's new on the bus front?

This year we have leased an ex-Crossville 1950 Bristol L5G KFM767 from

Steve Morris of Rexquote Heritage of Taunton Dene. We have got jobs for it already and if Ali can learn to change the gears then we'll actually get it to work. Of course Anthony and Will can change the gears perfectly already ahem, ahem. That's Steve Morris of Rexquote, not Steve Morris of Bus and Coach Preservation, nor Steve Morriss Alison's husband who has nothing at all to do with buses if at all possible.

TUESDAY SERVICE TO HAWES

Outward	
Ravenstonedale Kings Head	1007
Kirkby Stephen Station (arrive)	1030
(depart)	1040
Kirkby Stephen Square	1045
Outhgill	1103
Hawes Station Yard	1150
Return	
Hawes Station Yard	1510
Outhgill	1557
Kirkby Stephen Square	1610
Kirkby Stephen Station	1615
Ravenstonedale Kings Head	1625
EASTER TO OCTOBER	

CUMBRIA CLASSIC COACHES



Experience a ride on a Classic Halfcab

Tel: 015396 23254 for outings/private hire

Join us on one of our regular outings or hire the buses for your own special day, either way Cumbria Classic Coaches are a vintage experience you'll never forget!

NEW IN 2001 THURSDAY EDEN TOURS

Outward	
Ravenstonedale Bus depot	09.40
Kirkby Stephen Square (arrive)	09.55
(depart)	10.00
Return	
Kirkby Stephen Square	17.00
Ravenstonedale Bus depot	17.15
return times are very approximate	
7th June to 27th Sept.	
Price: £10.00 adults, children half price.	

If you want to be taken off our database (however doubtful it may seem) please contact us in some way and let us know!

Tel: 015396 23254

If you want to stay on our database and you have an email address please could we have it and then you can have this newsletter in colour!
claire@cumbriaclassiccoaches.co.uk



Cumbria Classic Coaches
Vintage coach hire for
weddings & special
days

Tel: 015396 23254
www.CumbriaClassicCoaches.co.uk

Eden Explorer



Timetable

Every Wednesday from 18th July - September 2001

	Outward	Homeward			
Hail & Ride	Kirkby Stephen Square	09.45		17.50	
	Soulby				
	Ormside	10.15		17.30	
	Appleby Moot Hall	10.30		17.20	
	Morland, Cliburn				
	Eamont Bridge				
	Penrith Bus Station dep.	11.10	13.45	15.20	16.40
	Wetheriggs Pottery	11.35	14.05	15.40	
	Pooley Bridge/ Ferry Pier	12.00	14.30	16.05	
	Dalemain House	12.15	14.45	16.20	
Rheged Discovery Centre	12.25	14.55	16.30		
Penrith Bus Station arr.	12.45	15.15	16.40		

It is possible to visit more than one attraction and with your ticket there are special entrance prices and bargains.

Fares

Full day out return **Kirkby Stephen, Appleby** etc.
 Adult £10.00 Children and concessions £5.00.
 Family ticket (max. 2 adults & 3 children) £25.00
 Hop on - Hop off **Penrith**
 Adult £5.00 Children and concessions £2.50.
 Family ticket (max. 2 adults & 3 children) £12.50



This regeneration service has been sponsored by
 Operators: **Cumbria Classic Coaches**
 Tel: 015396 23254 www.cumbriaclassiccoaches.co.uk



Named after the ancient Celtic kingdom Rheged

offers an all weather world of legend and myths, family fun and excitement, shopping and restaurants. In Britains largest grass covered building.

See the Imax Film for only £3.90 adults, £3.50 kids.

Dalemain House



A much loved family home dating back to medieval times. Set against the grandure of the lakeland fells.

- Tea-rooms and restaurant
- Gardens • Gift shop
- Plant centre
- Collections

Entry for 2 for the price of 1.

Penrith

The attractive town of Penrith is the hub of the Eden Valley offering traditional shops sophisticated arcades, a wealth of places to eat and an intriguing history.

10% off (not incl. sale items) at The Aroma Shop (just off the Market Square)

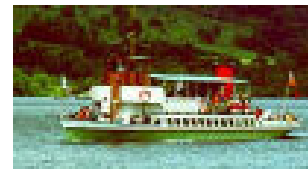
Wetheriggs - the UK's only steam powered pottery.



- Pottery & craft shops
 - Tea-room
 - Children's play areas
 - 'Have a go' area
- All in seven acres of beautiful surroundings.

A FREE cup of tea or coffee in our tea-room

Ullswater Steamers



Combine your ride on a vintage bus with a cruise on our 19th century steamer converted to oil, taking in spectacular views of Ullswater, the valley and the majestic Hellvelyn range.

2 adults for the price of 1 children free (max.3)

Pooley Bridge

Pooley Bridge sits on the edge of Lake Ullswater and is a delightful village in which to wander and enjoy refreshments, from a quaint coffee shop to a pleasant village pub.

Granny Dowbekins Teashop Cream Tea : £2.00

Special weekend breaks with a Champagne Tour of the Dales on a Vintage bus

20th - 22nd July
 17th - 19th August

Stay at Bowber Head either Bed and Breakfast or camping and Join us for a Dinner on Friday and Saturday evening

The Tour - on the Saturday

A drive on our vintage coaches is like a trip back in time 2 generations ago. Very little has changed in the beautiful scenery of the Upper Eden Valley and the Yorkshire Dales.

Our itinerary starts from Bowber Head and takes in:

Swaledale ~ with a 1 hr stop in Reeth to explore and take lunch and

Wensleydale ~ with a stop in Hawes to allow time for shopping or afternoon tea returning for dinner in the evening.

Total price for the Special Weekend Package Staying in the Farmhouse ~ £80.00 per person Incl. Friday - Dinner and Bed. Saturday - Breakfast, Tour, Dinner and Bed. Sunday- Breakfast

Camping (in your own tent or caravan) ~ £46.00 per person Incl. Friday - Dinner. Saturday - Tour and Dinner